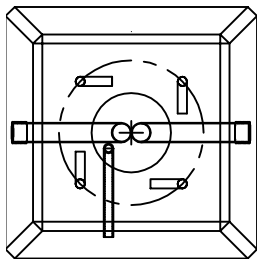
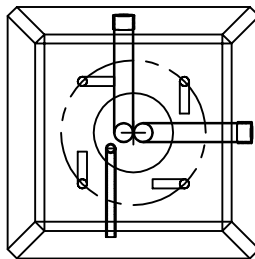


Arrangements possibles selon
Le modèle et le type de base de lampadaire

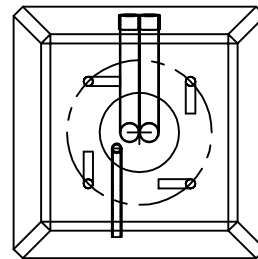
TYPES DE BASES MODÈLES BL-6



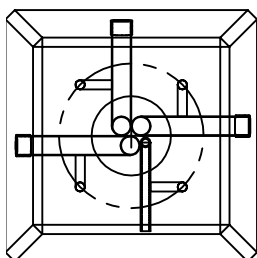
Type 1
CB: $\varnothing 323\text{MM MAX}$
CB: $\varnothing 130\text{MM MIN}$



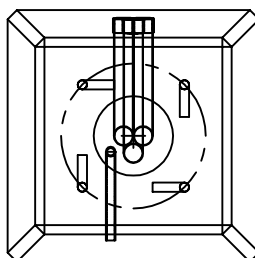
Type 2
CB: $\varnothing 323\text{MM MAX}$
CB: $\varnothing 130\text{MM MIN}$



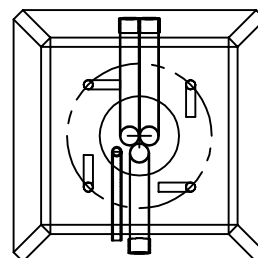
Type 3
CB: $\varnothing 323\text{MM MAX}$
CB: $\varnothing 130\text{MM MIN}$



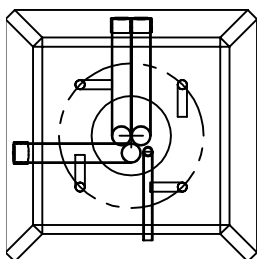
Type 4
CB: $\varnothing 323\text{MM MAX}$
CB: $\varnothing 130\text{MM MIN}$



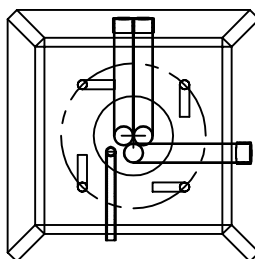
Type 5
CB: $\varnothing 323\text{MM MAX}$
CB: $\varnothing 130\text{MM MIN}$



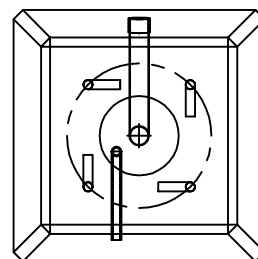
Type 6
CB: $\varnothing 323\text{MM MAX}$
CB: $\varnothing 130\text{MM MIN}$



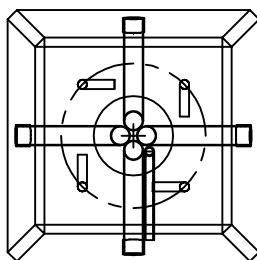
Type 7
CB: $\varnothing 323\text{MM MAX}$
CB: $\varnothing 130\text{MM MIN}$



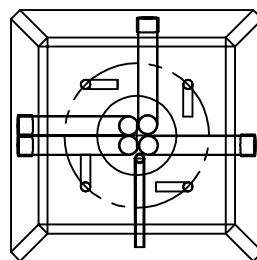
Type 8
CB: $\varnothing 323\text{MM MAX}$
CB: $\varnothing 130\text{MM MIN}$



Type 9
CB: $\varnothing 323\text{MM MAX}$
CB: $\varnothing 130\text{MM MIN}$



Type 10
CB: $\varnothing 323\text{MM MAX}$
CB: $\varnothing 155\text{MM MIN}$



Type 11
CB: $\varnothing 323\text{MM MAX}$
CB: $\varnothing 155\text{MM MIN}$